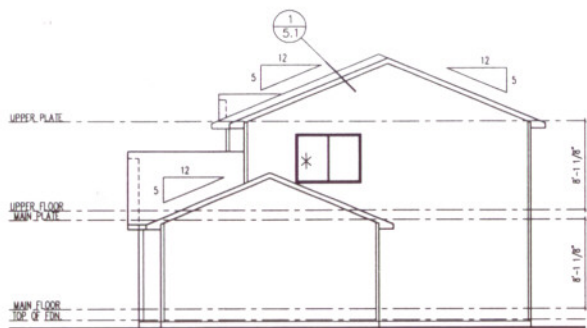


**TYPICAL NOTES:**

INTS-104

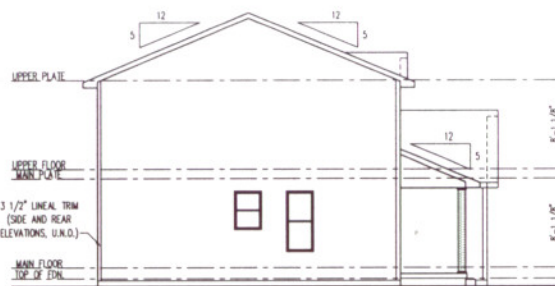
**1. TYPICAL CONSTRUCTION ASSEMBLIES:**

- A. ROOF CONSTRUCTION:  
COMPOSITION ROOF SHINGLES ON  
30# FELT ON  
1/2" OSB ROOF SHEATHING ON  
ROOF FRAMING MEMBERS  
AS NOTED ON FLOOR PLANS
- CEILING:  
FRAMED 16" O.C. = 1/2" GYPSUM BOARD  
FRAMED 24" O.C. = 5/8" GYPSUM BOARD
- B. EXTERIOR SIDING WALL CONSTRUCTION:  
VINYL SIDING (AS NOTED ON ELEVATIONS) ON  
HOUSE WRAP ON  
EXTERIOR WALL SHEATHING AS NOTED BELOW  
7/16" OSB ON FRONT ELEVATION, U.N.O.  
RIGID FOAM SHEATHING ON SIDE AND REAR WALLS.  
7/16" OSB ON FACE OF ALL GABLES  
7/16" OSB ON ALL INSIDE AND OUTSIDE CORNERS  
INTERIOR: 1/2" GYPSUM WALL BOARD.
- C. EXTERIOR MASONRY WALL CONSTRUCTION:  
BRICK VENEER w/  
MASONRY TIES 16" O.C. HORIZONTAL & VERTICAL OVER  
HOUSE WRAP ON  
7/16" OSB WALL SHEATHING.  
INTERIOR: 1/2" GYPSUM BOARD.
- D. BASEMENT AND GARAGE FLOOR CONSTRUCTION:  
4" CONCRETE SLAB (MINIMUM) ON  
COMPACTED STRUCTURAL FILL.
- E. FRAME FLOOR CONSTRUCTION:  
FINISH FLOORING (AS NOTED ON FLOOR PLANS) ON  
3/4" FLOOR SHEATHING ON  
1-JOISTS ENGINEERED FLOOR SYSTEM, U.N.O.  
(SIZE AND SPACING AS NOTED ON FLOOR PLANS)  
MAIN FLOOR CEILING: 5/8" GYPSUM BOARD  
FRAMED 24" O.C. = 5/8" GYPSUM BOARD  
FRAMED 16" O.C. = 1/2" GYPSUM BOARD
- 7. WINDOWS:  
ROUGH OPENING OF WINDOW TO BE NOTED IN FT./IN.  
ON FLOOR PLANS, U.N.O.  
TYPICAL HEAD HEIGHT FOR WINDOWS TO BE 6'-11 1/2"  
UNLESS NOTED OTHERWISE ON DRAWINGS
- A. CASEMENT WINDOWS:  
WINDOW HINGE NOTED ON EXTERIOR ELEVATIONS.  
NOTED ON PLANS AS CMWT
- B. SLIDING WINDOWS:  
NOTED ON PLANS AS SL
- C. SINGLE HUNG WINDOWS:  
NOTED ON PLANS AS SH
- D. DOUBLE HUNG WINDOWS:  
NOTED ON PLANS AS DH
- 8. DOORS:  
DOOR SIZES NOTED ON FLOOR PLANS IN FT./IN.  
TYPICAL HEAD HEIGHT FOR DOORS TO BE 6'-11"  
A. WOOD JAMBS AND CASING:  
ROUGH OPENING FOR HINGED DOORS TO BE 2"  
WIDER THAN DOOR SIZE NOTED ON PLAN.  
BI-FOLDS DOORS TO BE 2 1/4" WIDER THAN  
DOOR SIZE NOTED ON PLANS.  
ROUGH OPENING FOR BI-PASS DOORS TO BE 1"  
WIDER THAN DOOR SIZE NOTED ON PLANS
- B. GYPSUM BOARD OPENING:  
ROUGH OPENING FOR BI-PASS DOORS  
TO BE SAME AS DOOR SIZE NOTED ON PLANS.  
ROUGH OPENING FOR BI-FOLD DOORS TO BE  
1 1/4" WIDER THAN DOOR SIZE NOTED ON PLANS



**RIGHT ELEVATION**

SCALE: 1/8"=1'-0"



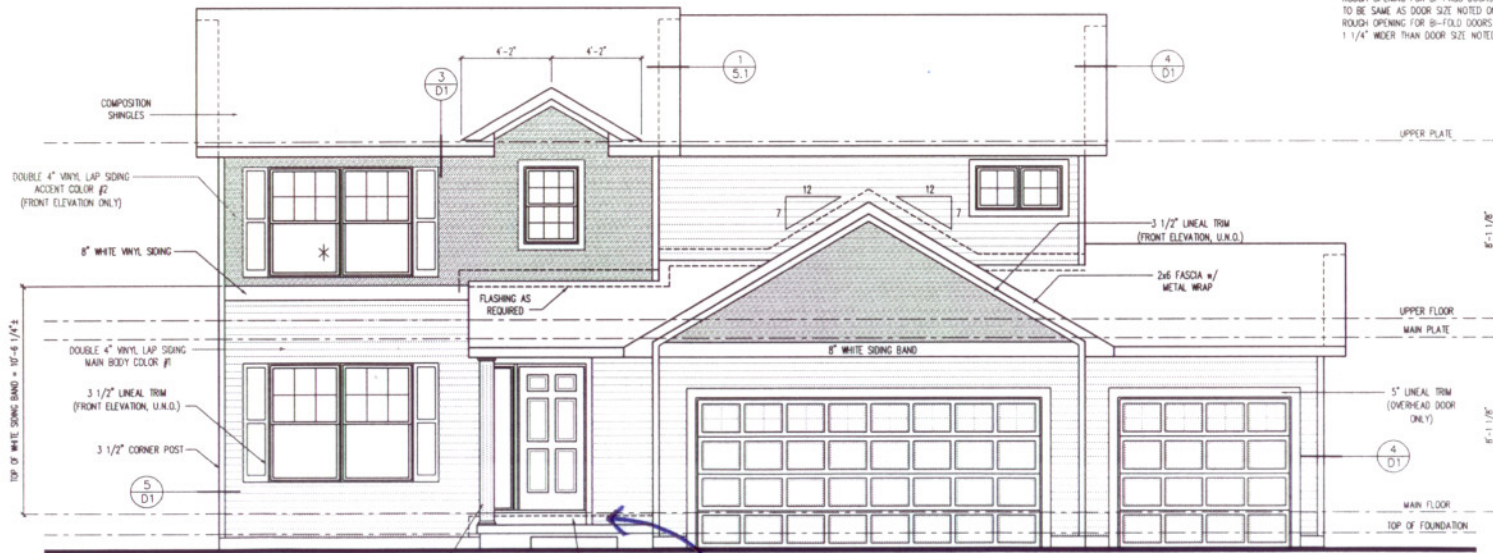
**LEFT ELEVATION**

SCALE: 1/8"=1'-0"



**REAR ELEVATION**

SCALE: 1/8"=1'-0"



**FRONT ELEVATION**

SCALE: 1/4"=1'-0"

\* WINDOWS SO NOTED MEET OR EXCEED APPLICABLE EGRESS REQUIREMENTS

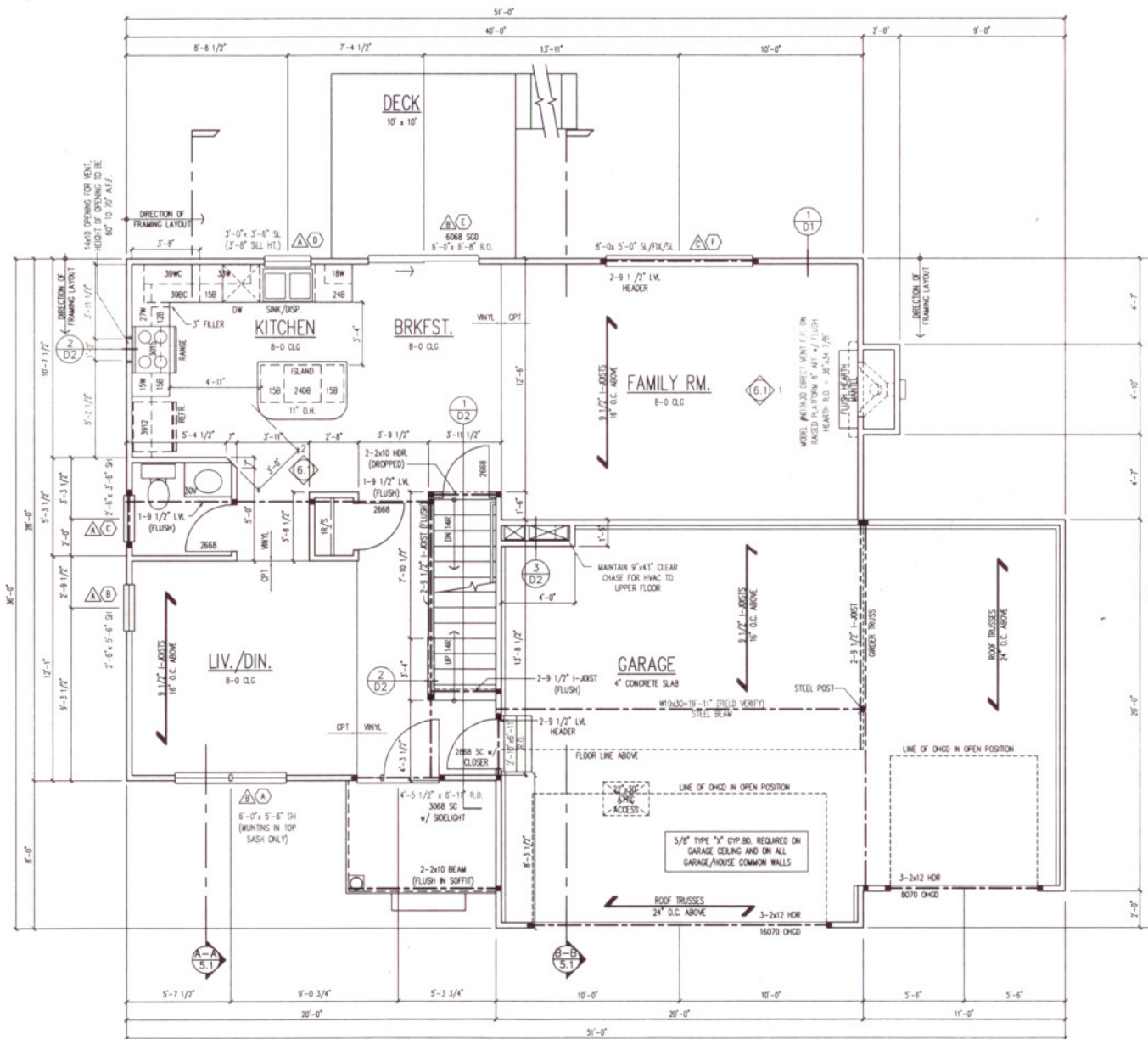
SUPERIOR ALUMINUM PRODUCTS 8" x 96" ROUND METAL COLUMN OR APPROVED EQUAL

2x8 UNDER DOOR w/ VINYL COIL WRAP

WALL SHEATHING ON FRONT ELEVATION SHALL BE 1/2" PLYWOOD, U.N.O.

*73/4" max height (top)*

**4 BEDROOMS**  
**3 CAR GARAGE**



### MAIN FLOOR PLAN

SCALE: 1/4"=1'-0"

### TYPICAL NOTES:

WTS-10A

#### 1. TYPICAL CONSTRUCTION ASSEMBLIES:

##### A. ROOF CONSTRUCTION:

COMPOSITION ROOF SHINGLES ON 3/8" FELT ON 1/2" OSB ROOF SHEATHING ON ROOF FRAMING MEMBERS AS NOTED ON FLOOR PLANS

##### B. EXTERIOR SIDING WALL CONSTRUCTION:

VINYL SIDING (AS NOTED ON ELEVATIONS) ON HOUSE WRAP ON EXTERIOR WALL SHEATHING AS NOTED BELOW: 7/16" OSB ON FRONT ELEVATION, U.N.O. RIGID FOAM SHEATHING ON SIDE AND REAR WALLS. 7/16" OSB ON FACE OF ALL GABLES. 7/16" OSB ON ALL INSIDE AND OUTSIDE CORNERS INTERIOR: 1/2" GYPSUM WALL BOARD.

##### C. EXTERIOR MASONRY WALL CONSTRUCTION:

BRICK VENEER w/ MASONRY RES 16" o.c. HORIZONTAL & VERTICAL OVER HOUSE WRAP ON 7/16" OSB WALL SHEATHING.

##### D. BASEMENT AND GARAGE FLOOR CONSTRUCTION:

4" CONCRETE SLAB (MINIMUM) ON COMPACTED STRUCTURAL FILL. FINISH FLOORING (AS NOTED ON FLOOR PLANS) ON 3/4" FLOOR SHEATHING ON 1-JOISTS ENGINEERED FLOOR SYSTEM U.N.O. (SIZE AND SPACING AS NOTED ON FLOOR PLANS) MAIN FLOOR CEILING: 5/8" GYPSUM BOARD. FRAMED 24" O.C. 5/8" GYPSUM BOARD. FRAMED 16" O.C. 1/2" GYPSUM BOARD.

##### 2. WINDOWS:

ROUGH OPENING OF WINDOW TO BE NOTED IN FT./IN. ON FLOOR PLANS, U.N.O. TYPICAL HEAD HEIGHT FOR WINDOWS TO BE 6'-11 1/2" UNLESS NOTED OTHERWISE ON DRAWINGS.

##### A. CASEMENT WINDOWS:

WINDOW HINGE NOTED ON EXTERIOR ELEVATIONS. NOTED ON PLANS AS CSM1.

##### B. SLIDING WINDOWS:

NOTED ON PLANS AS SL.

##### C. SINGLE HUNG WINDOWS:

NOTED ON PLANS AS SH.

##### D. DOUBLE HUNG WINDOWS:

NOTED ON PLANS AS DH.

##### 3. DOORS:

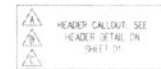
DOOR SIZES NOTED ON FLOOR PLANS IN FT./IN. TYPICAL HEAD HEIGHT FOR DOORS TO BE 6'-11"

##### A. WOOD JAMBS AND CASING:

ROUGH OPENING FOR HINGED DOORS TO BE 2" WIDER THAN DOOR SIZE NOTED ON PLAN. BI-FOLDS DOORS TO BE 2 1/4" WIDER THAN DOOR SIZE NOTED ON PLANS. ROUGH OPENING FOR BI-PASS DOORS TO BE 1" WIDER THAN DOOR SIZE NOTED ON PLANS.

##### B. GYPSUM BOARD OPENING:

ROUGH OPENING FOR BI-FOLD DOORS TO BE 1 1/4" WIDER THAN DOOR SIZE NOTED ON PLANS.



HEADER CALLOUT. SEE HEADER DETAIL ON SHEET 01.

SEE JOIST LAYOUT ON SHEET 01-1.

ALL EXTERIOR FRAME DIMENSIONS INCLUDE 3/8" THICK WALL SHEATHING.

ADJUST PLACEMENT OF FRAMING NUMBERS AS REQUIRED TO PROVIDE REQUIRED CLEARANCE FOR PLUMBING AND MECHANICAL SYSTEMS.

**4 BEDROOMS**  
**3 CAR GARAGE**